



PALADEX
Innovative Pipe Systems



AVROT
INDUSTRIES LTD.



PALADEX - Steel reinforce polyethylene pipes

Diam. 1000mm- 3000mm

The pipes are produced by unique technology



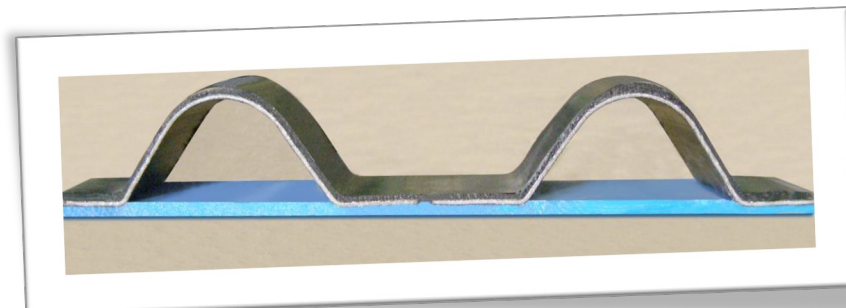
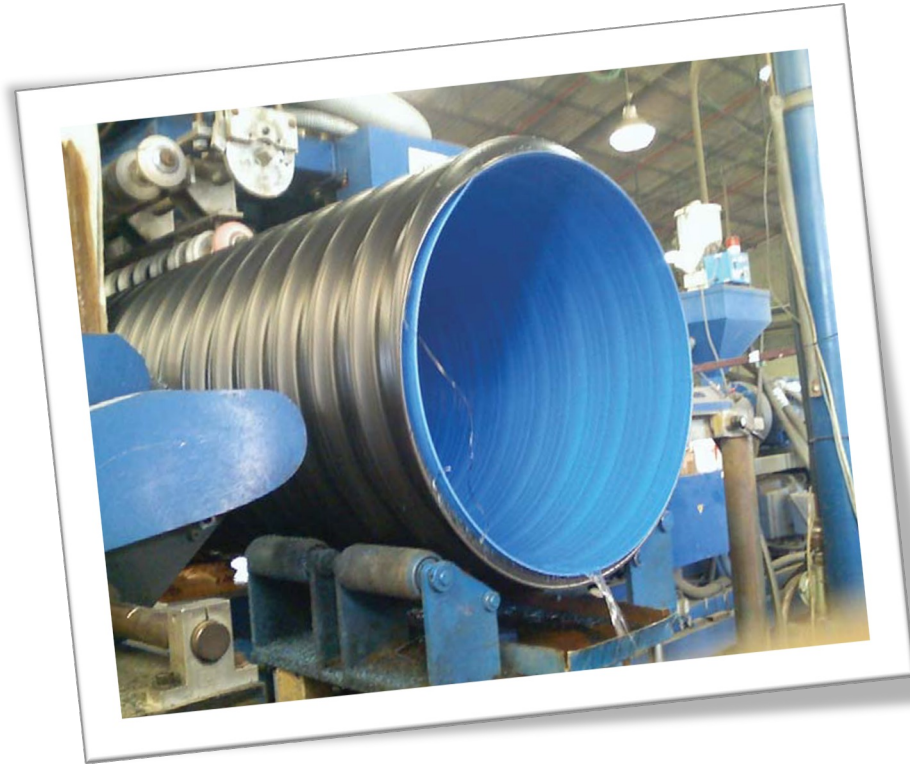
High mechanical resistance combine with the PE advantages

Mechanical resistance according **ISO 9969**

SN8 KN/m² SN12 KN/m² SN16 KN/m²











Easy Installation



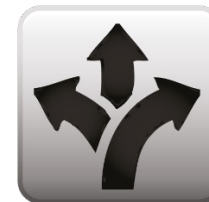
Strong & Protected



Resistant to chemicals & corrosion



High Static & Dynamic loads



Design Flexibility



No Entry of roots



Standard length of 6 meter



Light Weight



Up to 7m of underground water



UV protection



Minimum maintenance



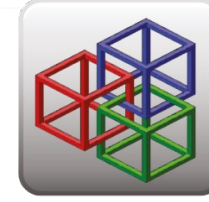
Pressure up to 0.75 Bar



Wide range of Diameter

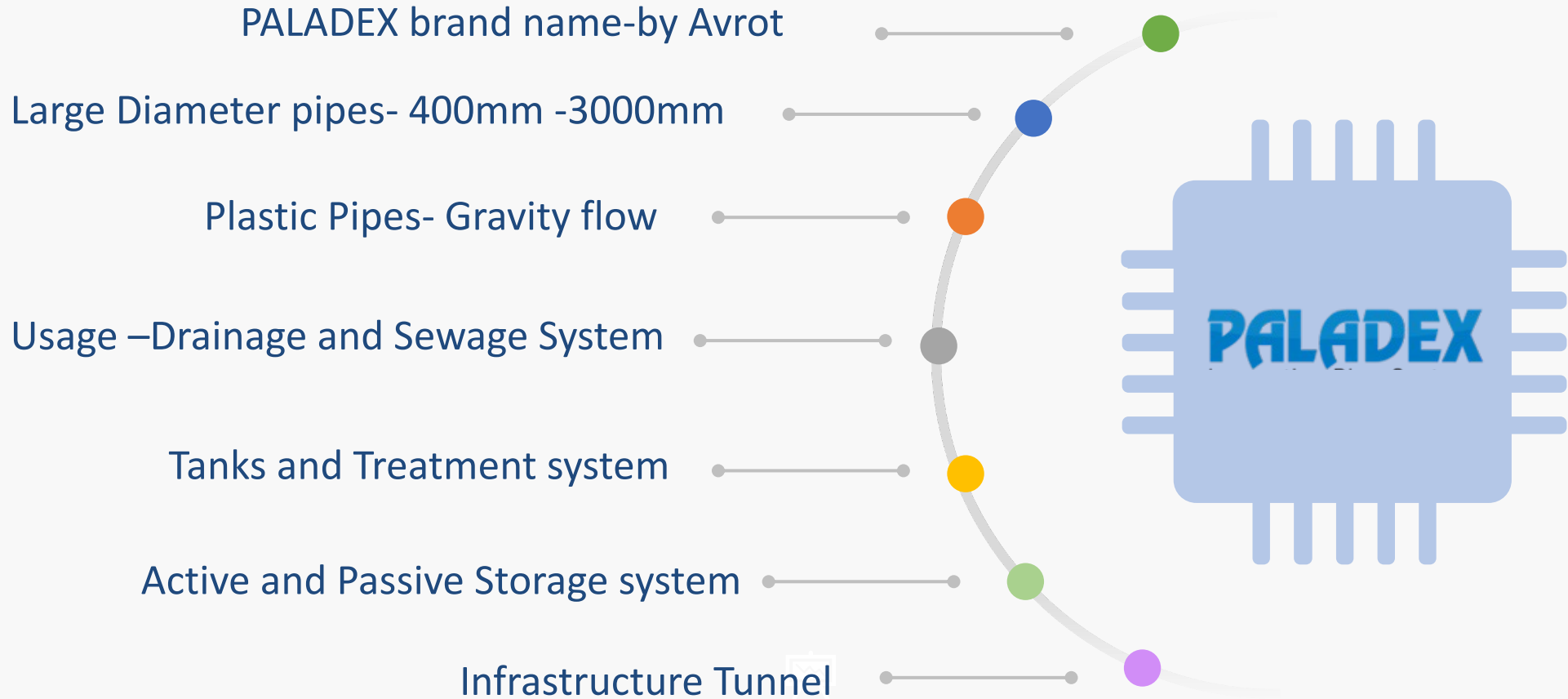


0-75 Deg C



Any geometry

PALADEX



Around The World

UK

France

Nigeria

Cyprus

Senegal

Italy

Jamaica

Corsica

Peru

Albania

Reunion

Netherland

New Zealand





Product Certificate

independent certification of your products & services

This is to certify that the following product or service has met the requirements detailed below:

Paladex Reinforced Corrugated PE Pipe System

For the manufacture of Paladex corrugated reinforced PE pipe system for gravity drains and sewers. Diameter range of 400mm to 1600mm and pipe stiffness range of SN4 to SN16.

Avrot Industries Ltd
Kibutz Sheer - Yezhak
69965
Israel

This product meets the requirements set out in WRc Assessment Schedule PT73800316 AS.

WRc Approved

1st March 2016
1st March 2021

PT73800316

WRc Assessment Certificate

Initial WRc test on metal reinforced corrugated PE pipe for gravity drains and sewers according to ASTM requirements for a production range from DN400 to 1600mm, SN4 to SN16.

Assessment of test results: see item 5

Number of samples: 2016-04-26 see item 2

Test period: see item 2

This test report comprises 1 page.

1st March 2016

1st March 2021

PT73800316

CSTB CERTIFICAT

ASSAINISSEMENT ÉLÉMENTS DE CANALISATIONS D'ASSAINISSEMENT PALADEX

Le CSTB atteste que le produit ci-dessus est conforme à des caractéristiques décrites dans le référentiel de certification CSTBat 17, après évaluation selon les modalités de contrôle définies dans ce référentiel.

La CSTB accorde à **PALADEX LTD - AVROT GROUP** **POB 73** **IL - 69965 MIGDAL HAHEK** **IL - 69905 YZHAH** l'usage de la marque CSTBat ASSAINISSEMENT pour le produit objet de cette décision, pour toute sa durée de validité et dans les conditions prévues par les exigences générales de la marque CSTBat et la référence mentionnée ci-dessus.

Décision de reconnaissance n° **599-PE30/01-198** du **15 février 2011**

Cette décision annule et remplace la décision n° **522-PE30/01-190** du 15 décembre 2009.

Caractéristiques certifiées: Dimension, Épaisseur de l'épave et du lamage, Résistance mécanique conforme aux prescriptions de l'Annexe Technique.

IIP CERTIFICATO DI CONFORMITÀ

Certificate of conformity

n° 789 / 2010 - Rev. 1

Prodotto: Tubi in Polietilene (PE) a parete strutturata con rinforzo in acciaio per scarichi interrati in pressione e fognature.

Caratteristiche certificate: Dimensione, Spessore di lamiere e spessore di lamiere, Resistenza meccanica.

Decisione di certificazione n° **599-PE30/01-198** del **15 febbraio 2011**.

The Standards Institution of Israel

License No. 49277 to mark a commodity with the Standards Mark

REINFORCED WALL PIPES OF STEEL REINFORCED POLYETHYLENE FOR UNDERGROUND DRAINAGE AND SEWERAGE

1 / 1 / 2011

Applications

- **PALADEX S** Sewage , wastewater, rainwater evacuation
- **PALADEX R** Retention basin for Rainwater
- **PALADEX T** Tanks For drinking water storage
- **PALADEX O** Grease separator
- **PALADEX X** Sludge and waste separator
- **PALADEX P** pumping manholes
- **PALADEX D** Double wall tank – for chemical products
- **PALADEX A** Irrigation water treatment



Ability to withstand very high loads

Underground water tank up to 10,000 m³

Very high resistance to earthquakes

Quick installation (2000 m³ tank takes ~1 week)

Zero occupy floor space



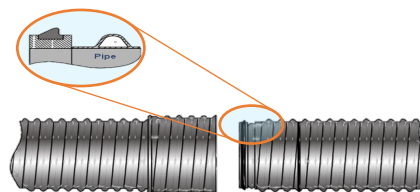
High resistance to chemicals

Very low self weight (about 3% of concrete)

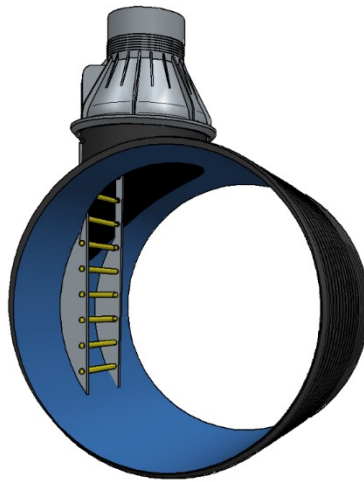
Modular Adjustable for max. utilization of the area

Suitable for drinking water

PADLAEX A Sewage , wastewater and rainwater evacuation



PALADEX R Retention basin for Rainwater, sewage



- The tanks are suitable for underground installation with load capacity of 60 tons with minimum coverage.
- Unlimited capacity 10 à 10,000 m³, can be supplied with different diameters
- The geometric construction and the materials with which the tanks are made allow great resistance to ground movements and has very high resistance to corrosion
- The basins can be supplied with slits or perforated
- Supplied with visit manholes , and with regulators

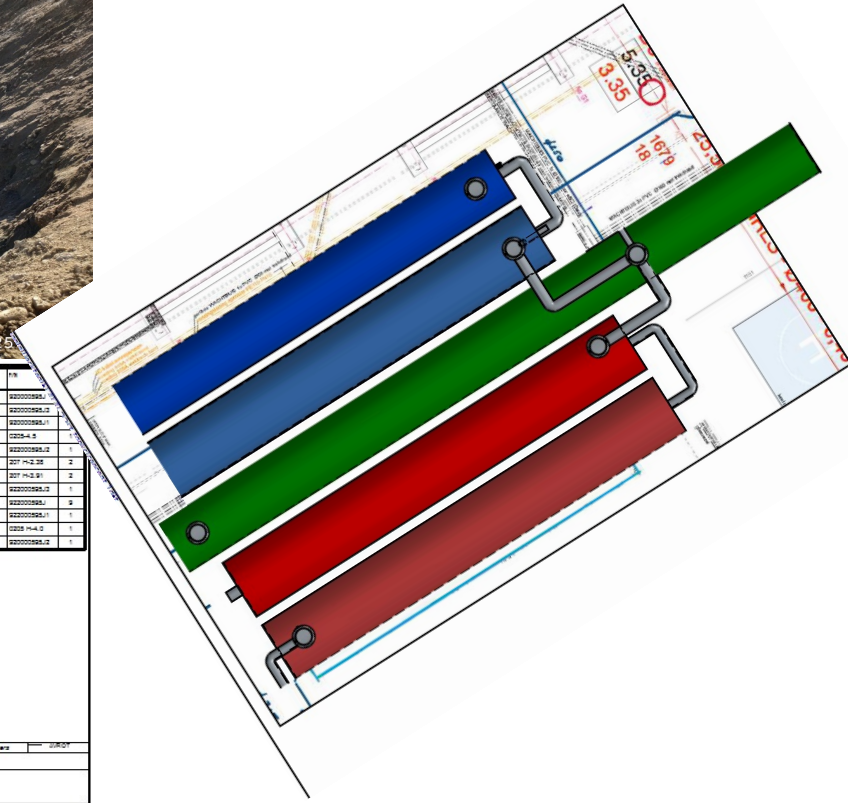


Item Number	Pisikahua ra arapora	Quantity Number	Quantity	Item Number	Pisikahua ra arapora	Quantity Number	Quantity
1	100-AL2	10100879	1	11	100-2100	102100879	1
2	2100-AL2	102100879	1	12	100-2100	102100879	1
3	2100-AL2	102100879	1	13	100-2200	102100879	1
4	2100-AL2	102100879	1	14	400mm x 500mm x 4	011002000	2
5	1000	10100879	6	15	400mm x 500mm x 4	011002000	1
6	2100	102100879	6	16	400mm x 500mm x 4	011002000	1
7	2100	102100879	6	17	400mm x 500mm x 4	011002000	1
8	2200 (2000)	2200001	7	18	400mm x 500mm x 4	011002000	1
9	2200	102100879	6				
10	100-1000	100100879	1				

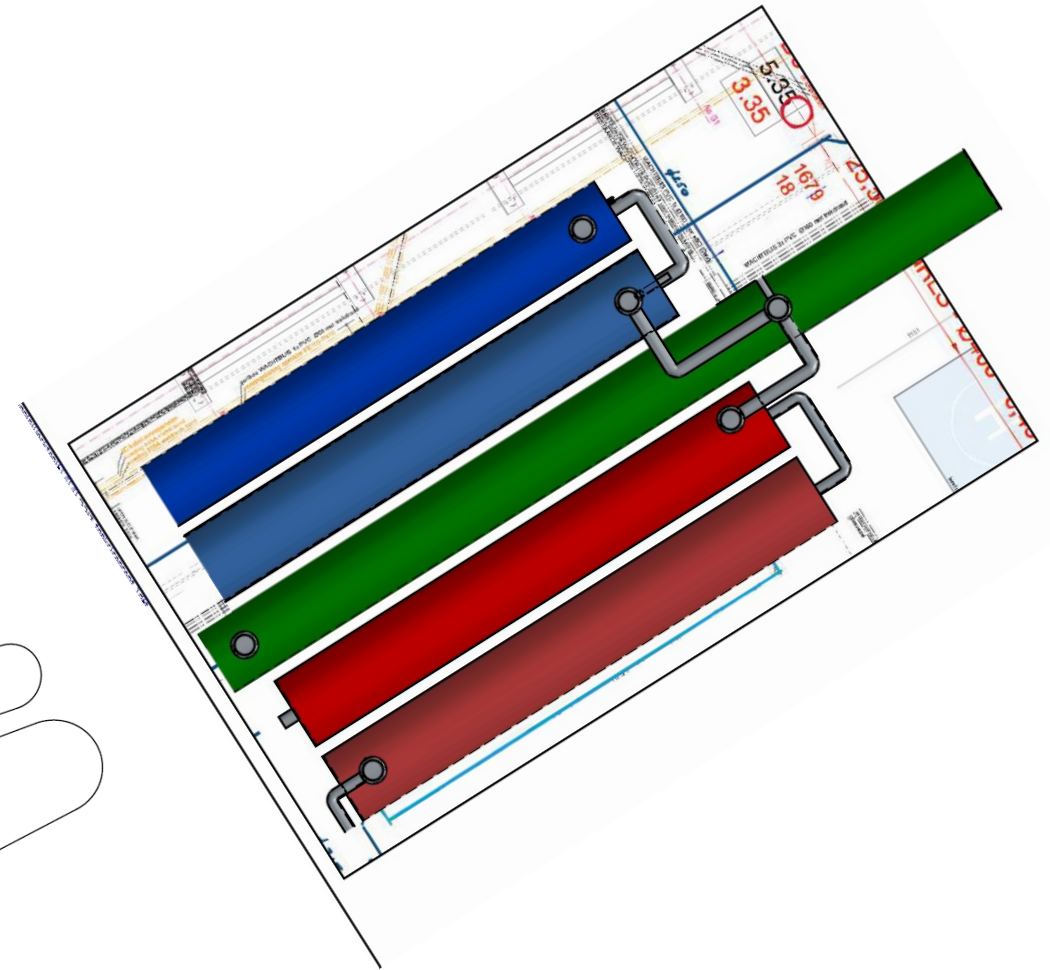
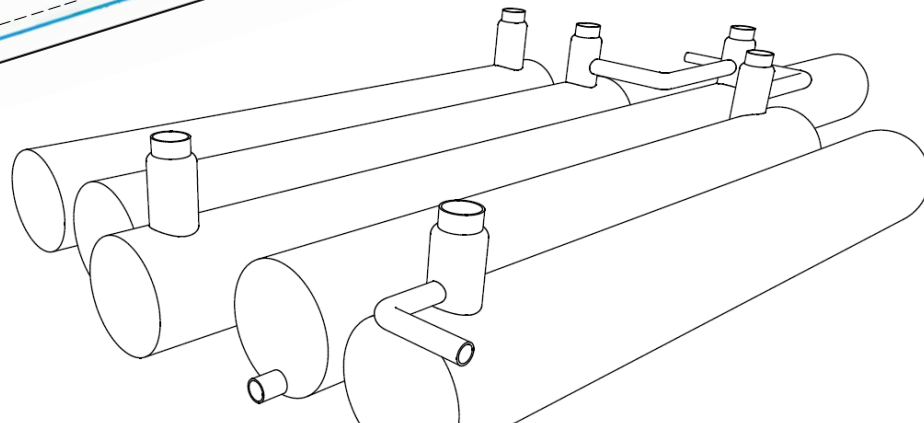
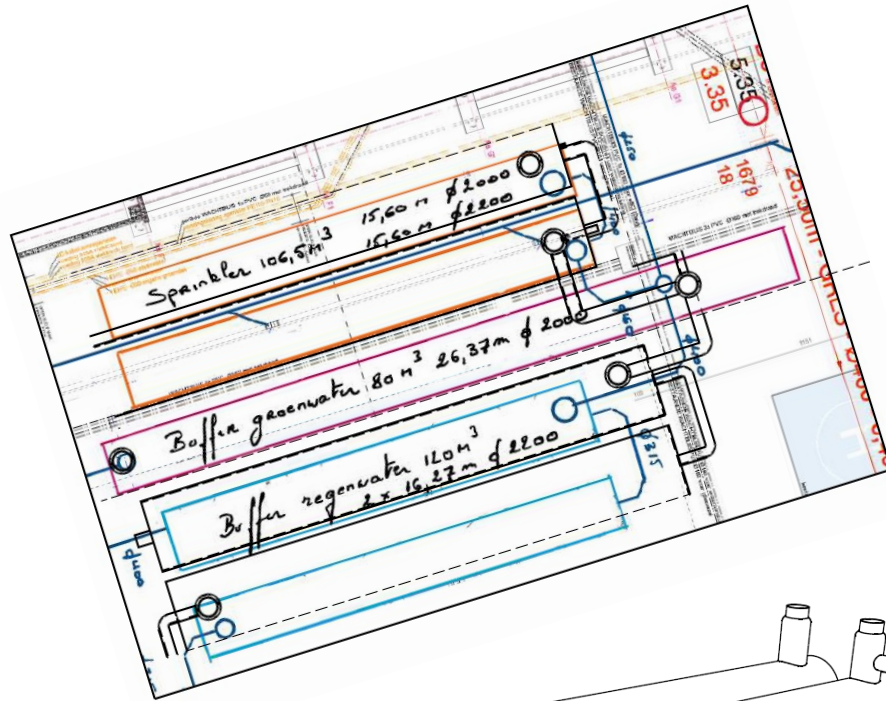
Project Name	Project No.	Project Date
Client Name	Client No.	Client Date
Contract No.	Contract Date	Contract Value
Site No.	Site Name	Site Address
Site Contact	Site Phone	Site Email
Site Manager	Site Supervisor	Site Foreman
Site Safety Officer	Site Health Officer	Site Environmental Officer
Site Quality Officer	Site Compliance Officer	Site Risk Officer
Site Security Officer	Site Traffic Officer	Site Waste Officer
Site Fire Officer	Site Emergency Officer	Site Incident Officer
Site First Aid Officer	Site Welfare Officer	Site Welfare Officer

Item Number	Item	Item
1	PALADEX PE Ø110 2000 mm S18 S.95m	02000989.2
2	PALADEX PE Ø110 2000 mm S18 S.95m + PLATE SLEV 1000	02000989.2
3	PALADEX PE Ø110 2000 S.95m PREPARATION FOR SW	02000989.1
4	SLEV 800 MM x 4.0 METER	02000989.5
5	PALADEX PE Ø110 2000 S.95m + PLATE SLEV 1000	02000989.2
6	ELEVATION 1000 MM x 2.25 M	02000989.2
7	ELEVATION 1000 MM x 2.25 METER	02000989.2
8	PALADEX PE Ø110 2000 S.95m + PLATE SLEV 1000	02000989.2
9	PALADEX PE Ø110 2000 S.95m	02000989.1
10	PALADEX PE Ø110 2000 S.95m PREPARATION FOR SW	02000989.1
11	SLEV 800 MM x 4.0 METER	02000989.5
12	PALADEX PE Ø110 2000 S.95m+PLATE SLEV 1000	02000989.2

Project Name	Project No.	Project Date
Client Name	Client No.	Client Date
Contract No.	Contract Date	Contract Value
Site No.	Site Name	Site Address
Site Contact	Site Phone	Site Email
Site Manager	Site Supervisor	Site Foreman
Site Safety Officer	Site Health Officer	Site Environmental Officer
Site Quality Officer	Site Compliance Officer	Site Risk Officer
Site Security Officer	Site Traffic Officer	Site Waste Officer
Site Fire Officer	Site Emergency Officer	Site Incident Officer
Site First Aid Officer	Site Welfare Officer	Site Welfare Officer



PALADEX R Retention basin for Rainwater, sewage



PALADEX T Tanks For drinking water



- The tanks are suitable for underground installation with load capacity of 60 tons with minimum coverage.
- Unlimited capacity 10 à 10,000 m³, can be supplied with different diameters
- The geometric construction and the materials with which the tanks are made allow great resistance to ground movements and has very high resistance to corrosion
- The basins can be supplied with slits or perforated
- Supplied with visit manholes, and with regulators

PALADEX O Grease separators



- The grease separator is intended to separate grease and fuels before they enter the purification system
- Capacity up to 80 L/S.
- Meets the requirements of EN1825
- High mechanical resistance to ground loads allows savings in installation costs, no need for concrete wrapping as in rotating products
- There are grease separators in vertical and horizontal configuration.
- Grease separators are produced according to all project needs.

PALADEX X Suldage and waste separators



- Waste and sludge separators prevent the passage of heavy and floating accumulations in the sanitary and industrial sewage system.
- Separators reduce adverse effects on the treatment system by upstream separation and prevent shutdown of the pumping system.
- The separators are intended for an above-ground or underground installation and exist in volume capacities of 5,000 to 50,000 liters.
- The evacuation of sludge and waste is carried out by pumping or mechanical collection.
- The separators are produced according to the requirements of the site and of the designer.
- It is possible to produce separators with several tanks, double tanks, etc.

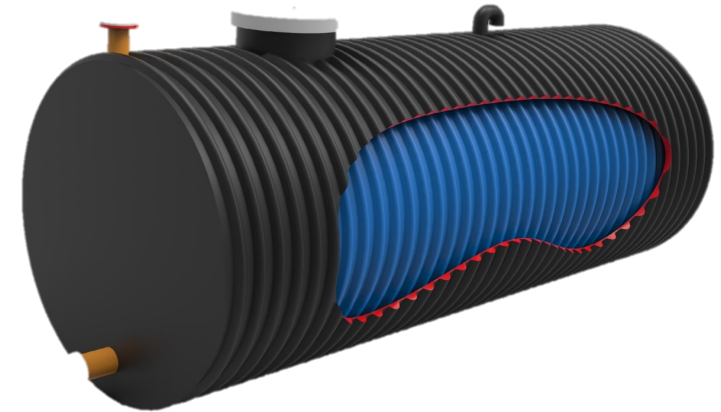
PALADEX P Pumping manholes



- Large range of diameters– up to 2500mm
- Very high mechanical resistance due to the structure of the product and integration between steel & Polyethylene.
- Vacuum resistance underground water up to 7.5 m
- Access by 1000/630 manhole with steeps
- Welded inlet and outlet which guarantees tightness
- Capacité de Volume 5,000-30,000 L
- Meets the requirements of EN1825

PALADEX D Double wall tank – for chemical products

- Double tank (one tank in the other) in one piece serving as a collection container and as an integrated one-piece manifold.
- All kinds of volumes.
- The tanks are produce from polyethylene and are resistant to a wide range of chemicals.
- The capacity of the outer container is larger than the volume of the collector by 20%.
- Available in vertical and horizontal configuration.
- Very light tank .
- The tank is produced by galvanized steel and covered with polyethylene - no need for cathodic protection for the underground installation.
- The collection container is equipped with openings to allow control and emptying of the two collection areas.



- **PALADEX A** Irrigation water treatment
Hydroponic irrigation /Irrigation water is treated - adding fertilizer



PALADEX F system contains huge underground water reservoirs.

Water is the main components in extinguishing fires, their rapid availability is critical.



Types of storm water tanks (made by pipes)

- Steel Pipes
- Steel reinforced PE pipes

Bassin d'orage
Récupération d'eau pluviales
Stockage d'eau potable
Gestion de effluents & industries

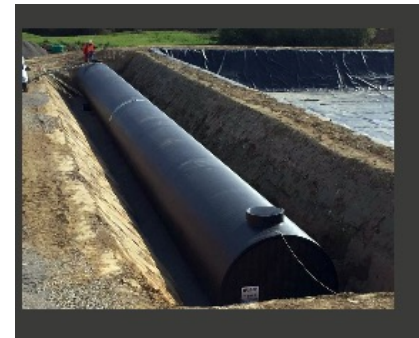


- Polyéthylène Pipes

Bassin d'orage
Récupération d'eau pluviales
Stockage d'eau potable
Gestion de effluents & industries

- Fiberglass pipes

Bassin d'orage
Récupération d'eau pluviales
Stockage d'eau potable
Gestion de effluents & industries



- **PALASTORM**

Capacité-78% du diameter

Bon accès pour nettoyage

Résistance mécanique- SN4,SN8, SN12, SN16

Profondeur maximale - 16 m

peut pas être installé sur tous les types de terrain

Pour tous les types de liquides:

eau potable, eau pluviale, produits chimiques, eaux usées

Connection tulipe et partie male

- **WEHOLITE**

Capacité-78% du diameter

Bon accès pour nettoyage

Résistance mécanique- SN2,SN4

Profondeur maximale - 8 m

peut pas être installé sur tous les types de terrain

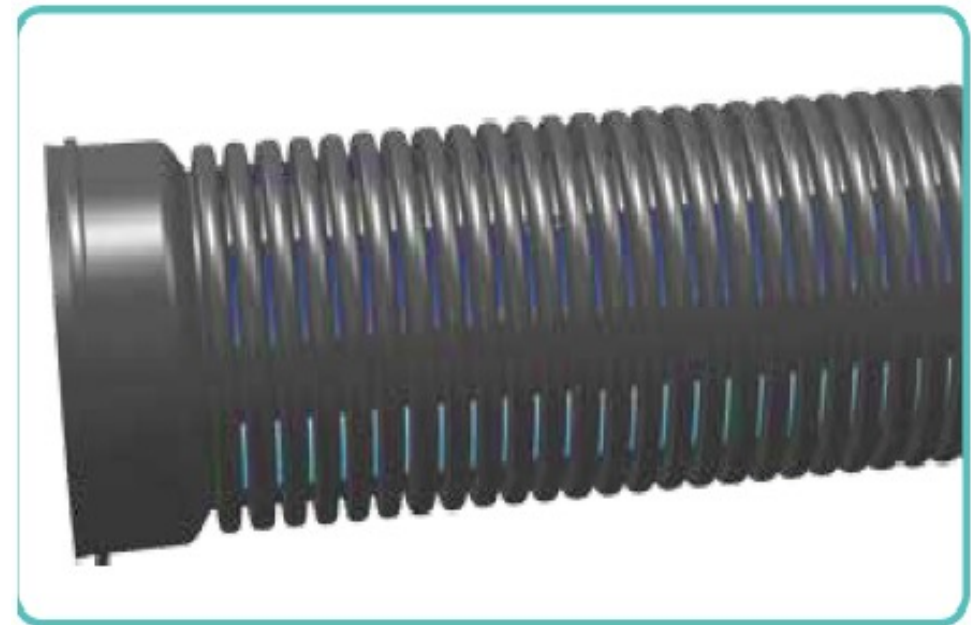
Pour tous les types de liquides:

eau potable, eau pluviale, produits chimiques, eaux usées

Nécessite de soudure ou des accessoires spéciaux pour la connexion

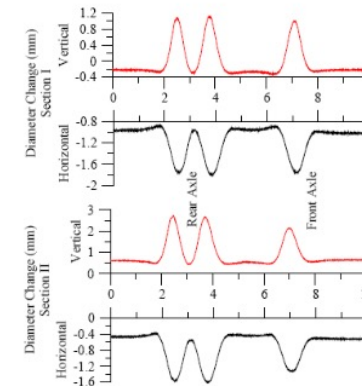


PALADEX Perforated/ Slotted pipes





Ring stiffness test according ISO 9969



50.4 ton roller/dumper (loaded), 0.45 compacted cover

HEAVY LIVE LOAD



90 Tons
On top of
30 cm of
loose cover

Avrot industrial has many business partners. Due to the multiple collaborations, the company can provide a wide range of products.

- **Paladex – Steel reinforce polyethylene pipes**
1000-2000mm up to 12m length
From 2300 – 2500mm come in pieces welded on site
- **High density polyethylene (HDPE) for high pressure**
Pipes for high pressure water 8,10,12,16 Atmosphere
From 160-1200mm
- **Manhole products**
600,800,1000mm with custom made
- **PVC Pipes for sewage (High pressure)**
110-500mm 16 m length
- **Partners catalogues**

<https://www.paladhy.com/ENG/Home>

Thank You

